

About two teratological Haliplidae (Coleoptera)

by

B. J. van VONDEL

ABSTRACT. — Two cases of teratological Haliplidae are reported: *Haliplus immaculatus* with the left hind-tarsus doubled and *Haliplus ruficollis* with the left antenna partially doubled.

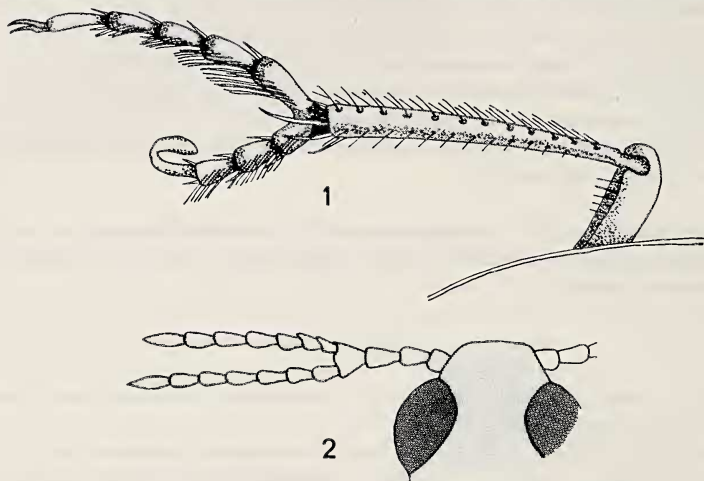


Fig. 1. Teratological left hind-tarsus of *Haliplus immaculatus*.

Fig. 2. Teratological left antenna of *Haliplus ruficollis*.

During my revision of the collection of Dutch Haliplidae present in the Rijksmuseum van Natuurlijke Historie in Leiden I discovered two teratological specimens. In these small beetles such cases are only noticed when thoroughly studied through the binocular. This may be the reason why publications on teratology nearly always concern large or rather large beetles and very seldom small ones like Haliplidae measuring 3 to 4 millimeters (Balazuc, 1948). Actually I do not know of any publication of teratological Haliplidae.

While Haliplidae are normally glued to a piece of paper or cardboard the antennae or legs are not always completely visible. So it is possible that I overlooked other cases. Based on the material I studied so far and taking in account the possibility of overlooking I estimate that the chance to meet a teratological specimen of this waterbeetle-family is about 1 to 5000.

The first specimen concerns *Haliplus immaculatus* Gerhardt, labelled: "Holland (Z.H.), Meyndel: dune lake: DWL-reservoir no. 08., E. J. v. Nieukerken & J. v. Tol, sample 19730905-01". The left hind-tarsus is doubled (fig. 1.), but the second tarsus is not developed completely and has no claws.

The second specimen concerns *Haliplus ruficollis* (Degeer), labelled: "De Meern (Utr.), 22.IX.1960, P. J. Hartevelt, Ph. Pronk". The left antenna is doubled from the fifth segment and both branches are developed completely, although they have not the same length (fig. 2.).

LITERATURE

Balazuc, J., 1948. La tératologie des Coléoptères. — *Mém. Mus. natn. Hist. nat.* [2] 25: 1-293.

Roestuin 78, 3343 CV Hendrik Ido Ambacht.